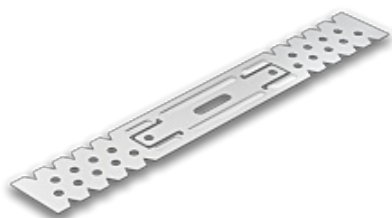




Ceiling adjusting bracket ES 60/125 0.75mm for CD60 profile



Manufacturer	
Dimension	working length 125 mm thick. 0.75 mm
Weight	0.04 kg
Product Code	ES60-125
EAN	5908282431039
SKU	000282
IBB ID	9342

Product specification

Manufacturer	PUNTO PRUSZYNSKI	Unit	pcs
EAN	5908282431039	Dimension	working length 125 mm thick. 0.75 mm

Adjusting bracket ES is designed for preparation of suspended ceiling grid is systems of drywall interior construction with gypsum plasterboard.

Drylining brackets manufactured from galvanized mild steel section.
Used vertically within a wall lining, located into the liner track.

The basic element for attaching a steel ceiling structure of CD 60 profiles to a wooden structure, e.g. a roof truss, as well as to massive walls and ceilings.

Element of a wall, ceiling or attic cladding system.
It allows you to move the plasterboard structure away from the ceiling or wall surface.